

1 检查您的电视连接

首先查看一下当前的设置

A. 如果您已安装了音响和音频接收器, 请将它们断开。PLAYBASE 不需要这些设备。

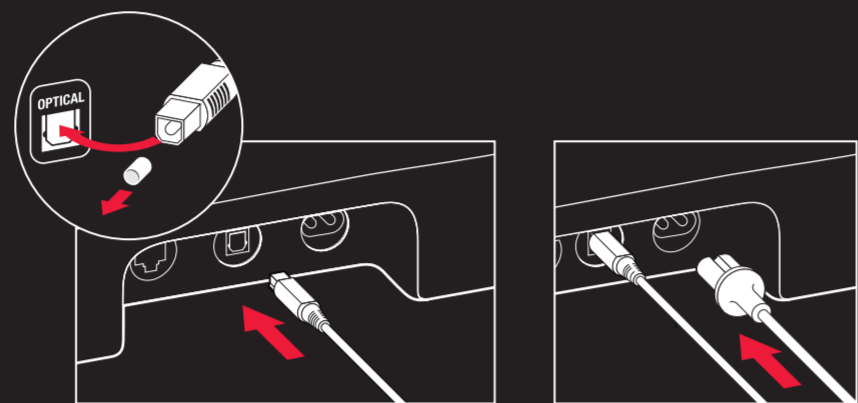
B. 确保您的流媒体设备、游戏机、DVD/蓝光播放机和有线电视机顶盒都直接连接到电视。

1 Check your TV connections

Take a look at your current setup

A. If you have existing speakers and an audio receiver, disconnect them. You won't need them with PLAYBASE.

B. Make sure your streaming device, gaming console, DVD/Blu-ray player and cable box are all connected directly to your TV.



光纤音频线

电源线

2 连接线缆 PLAYBASE

光纤音频线

取下光纤音频线的保护盖, 插入 PLAYBASE 的数字音频输入口, 插入时请仔细对齐。

电源线

将电源线完全插入 PLAYBASE 的电源端口。

2 Plug the cables into PLAYBASE

Audio cable

Remove the protective caps. Connect the cable into PLAYBASE's digital audio input, aligning it carefully.

Power cord

Push the power cord all the way into PLAYBASE's power port.



A. 电视下面

B. 在电视柜内

3 选择位置

A. 电视下面

将Sonos徽标朝前, 放置在电视下方。请确保电视平稳的放置在PLAYBASE之上。如果电视比较重, 建议您与其他人一起搬放。

B. 在电视柜内

为了获得良好的音效, 请将PLAYBASE放置在电视柜的前半部分, 但切勿悬空, 并最好在两侧各留出3厘米的空间。

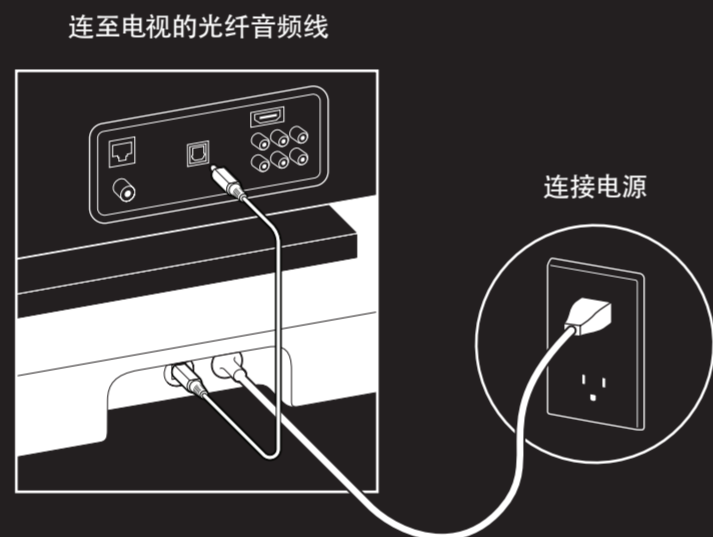
3 Choose a location

A. Under a TV

Lift your TV and put PLAYBASE under it with the Sonos logo facing front. Make sure your TV sits flat and is fully supported by PLAYBASE. TVs can be heavy - we recommend having someone help you lift it.

B. On a TV cabinet shelf

For the best sound, place PLAYBASE toward the front of the furniture but DON'T let it hang over the edge; allow 1-inch clearance on both sides.



连至电视的光纤音频线

连接电源

4 分别连接电视和电源

光纤音频线

将音频线插入电视的数字音频输出端口。

电源线

将电源线插入电源插座。

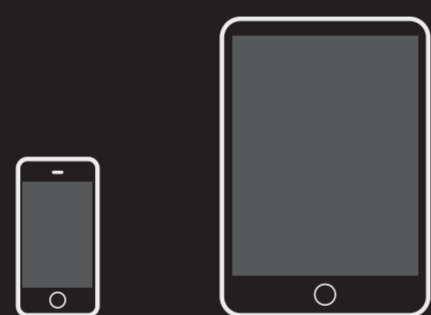
4 Plug the cables into TV and power

Audio cable

Connect the other end of the audio cable into your TV's digital audio output.

Power cord

Plug the power cord into a wall outlet.



手机

平板

下载Sonos App

5 获取 Sonos App

打开 App 然后根据提示进行操作。

5 Download the Sonos app

Open the app and follow the setup instructions.



触控 控制

触控

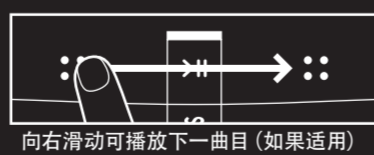
使用 PLAYBASE 触控界面控制音量和音乐播放



减小音量 播放/暂停 增大音量



向左滑动可播放上一曲目 (如果适用)



向右滑动可播放下一曲目 (如果适用)

电视遥控器

使用电视遥控器直接控制音量。

Sonos App

使用移动终端上的Sonos App来播放音乐, 控制音量, 以及开启人声增强功能和夜间模式。



Touch controls

Use PLAYBASE's touch interface to control volume and music playback.

TV remote

Use your TV remote to adjust volume. The Sonos app will help you get this working.

Sonos app

Use the Sonos app on your mobile device to control volume, activate speech enhancement and night mode, and play music.

希望了解更多

网址
sonos.com/support

邮件
support@sonos.com

用户手册及常见问题解答
sonos.com/guides

技术支持热线
 中文: +86 400 664 9889
 英文: +1 800 680 2345

Ask us

Website
sonos.com/support

Email
support@sonos.com

Product User Guides
sonos.com/guides

Telephone
 China (Mandarin): +86 400 664 9889
 China (English): +1 800 680 2345

SONOS

The Home Sound System

